

**MODEL: ELENI
INSTALLATION INSTRUCTIONS**

READ THIS FIRST

IMPORTANT SAFETY INSTRUCTIONS:

- a) Read all instructions before installing fixture.
- b) Handle light guide only by the center metal parts, do not grab the light guide by the acrylic, or try not to touch acrylic with bare hands.
- c) Do not conceal or extend exposed conductors through a building wall.
- d) For dry-location interior use only. Do not install in wet or damp locations.
- e) To reduce the risks of fire and burns, do not install this lighting system where the exposed bare conductors can be shorted or contact any conductive material.
- f) To reduce the risk of fire and overheating, make sure all connectors are securely fastened.
- g) Do not install any luminaire closer than 6 inches from any curtain, or similar combustible material.
- h) Turn off electrical power before installing or modifying the lighting system in any way.
- i) Do not install any part of this system less than 7ft (2.15m) above the floor; the Class 2, low-voltage power suspension cables used in this product are UL rated for installation at a minimum height of 7ft above the floor.

Caution

Check to see if you need a permit. Observe applicable building and electrical codes. Contact a licensed electrician if you have any doubts or questions about the connections, or if your home's wiring doesn't appear compatible with the changes you're making.

Required tools

- Philips Screwdriver
- Wire cutters and strippers (only if cables in junction box are not already stripped)

Step 1 – Turn off power

- 1.1 In your electrical circuit panel, locate the circuit breaker control for the room where you'll be working, and switch the circuit off.
- 1.2 If the circuits in your panel aren't labeled, turn on the existing light, and turn off the power to each circuit until the light goes out. Leave the power off, and label this circuit breaker for future reference. Also, turn off the light's wall switch.

Step 2 - If there is one, remove the old fixture

- 2.1 Remove the old fixture. Remove and discard the old wire connectors
- 2.2 Disconnect the fixture wires from the installed wires in the junction box (electrical box in ceiling).

Step 3 - Tighten junction box mounting screws

- 3.1 Make sure the cross-bracket provided can be mounted to the junction box; Loom cross-brackets can be mounted to a wide-variety of junction boxes.
- 3.2 Check the junction box in the ceiling where the fixture is to be attached, to see if it is secure or loose. If the junction box is loose, re-secure with screws. The junction box must be securely attached to the building structure to support the weight of the fixture.

Step 4 - Check existing wiring in junction box

- 4.1 The neutral (white jacketed wire) and switch leg (line voltage, black jacketed wire) wires must be a minimum of 6 inches in length. Therefore, it may be necessary to add 14/2 gauge insulated copper wire using marrets to connect to the cable in the junction box for added length.
- 4.2 The junction box must also be grounded or attached to a ground wire in the ceiling; make sure the ground wire (bare copper) is fastened to the junction box. If you have doubts about the suitability of the existing box or concerns about electrical connections, contact a licensed electrician.

Step 5 - Connect mounting cross-bracket

- 5.1 Using the two machine screws provided, securely fasten the mounting bracket to the junction box
- 5.2 Connect the green grounding wire from the mounting bracket, to the grounding wire in the junction box.
- 5.3 Thread in the two long screws as shown in figure 1. Note that the bracket may need to be rotated accordingly to allow clearance for the long screws.

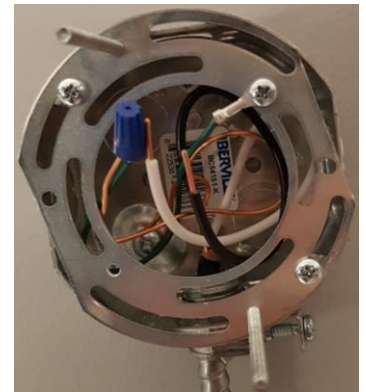
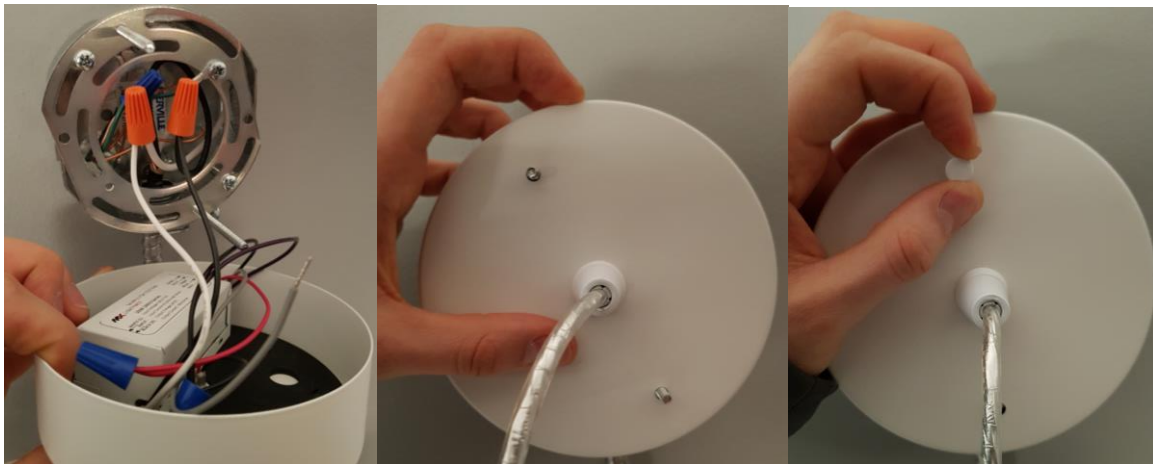


Figure 1

Step 6 - Connect the fixture

- 6.1 Using marrets, connect the live wire from the LED driver to the switch leg (line voltage, black jacketed wire) and the neutral wire from the driver to the white wire. **If the fixture is not being connected to a dimmer switch, please use the marrets provided to cap the dimmer wires**
- 6.2 Slide the canopy over the two long screws and use the white caps to tighten the canopy secure.



Your luminaire is now ready to turn on and be experienced!